

PLANT SCHEDULE

SYMBOL	CODE	QTY	BOTANICAL / COMMON NAME	CAL.	CONT.	SIZE
ORNAMENTAL TREES						
	IY	15	Ilex vomitoria 'Pride of Houston' / Pride of Houston Yaupon	3" Cal.	Cont. or B&B	8' HT MIN
	CM	5	Lagerstroemia indica 'Natchez' / Crepe Myrtle	3-5 CANES, 3" OVERALL	B&B or Cont.	8' HT MIN
SHADE TREES						
	AG	2	Acer grandidentatum / Bigtooth Maple	3" Cal.	B&B or Cont.	12' Ht. Min.
	QV	5	Quercus virginiana / Southern Live Oak	3" Cal.	B&B	10'-12' HT
	UC	3	Ulmus crassifolia / Cedar Elm	3" Cal.	B&B or Cont.	12' Ht. Min.
SYMBOL	CODE	QTY	BOTANICAL / COMMON NAME	CONTAINER	SPACING	SIZE
SHRUBS						
	AE	19	Abelia x 'Edward Goucher' / Edward Goucher Abelia	3 gal.	Cont.	
	IB	39	Ilex cornuta 'Burfordii Nana' / Dwarf Burford Holly	5 gal.	Per Plan	24" Ht. Min, 18" Spr.
SYMBOL	CODE	QTY	BOTANICAL / COMMON NAME	CONT	SPACING	SIZE
GROUND COVERS						
	CT	13,159 sf	Cynodon dactylon 'Tif 419' / Bermuda Grass Sod	sod		
	DG2	658 sf	Hardwood Mulch	---		

LANDSCAPE CALCULATIONS CARROLLTON, TX.

ZONING:	LR-2, PD 212
TOTAL SITE AREA:	48,010 SF
LANDSCAPE AREA REQUIRED:	7,201 SF (15% OF SITE AREA)
LANDSCAPE AREA PROVIDED:	13,905 SF (28.9% OF SITE AREA)
BUFFER AREA	
20' LANDSCAPE BUFFER:	3,420 SF
MAXIMUM TURF COVERAGE:	1,710 SF (50%)
TURF COVERAGE:	1,230 SF (35.9%)
STREET FRONTAGE:	171 LF
SHADE TREES REQUIRED:	7 TREES (1 TREE/25 LF)
SHADE TREES PROVIDED:	7 TREES
ORNAMENTAL TREES REQUIRED:	5 TREES (3 TREES/100 LF)
ORNAMENTAL TREES PROVIDED:	5 TREES
SHRUBS REQUIRED:	58 SHRUBS (34 SHRUBS/100 LF)
SHRUBS PROVIDED:	58 SHRUBS
SITE TREES	
SITE AREA EXCLUDING BLDG/PAVEMENT:	13,905 SF
SHADE TREES REQUIRED:	5 TREES (1 TREE/3,000 SF)
SHADE TREES PROVIDED:	5 TREES
PARKING LOT	
TOTAL PARKING SPACES:	25
PARKING AREA:	14,612 SF
PARKING AREA LANDSCAPE REQUIRED:	730 SF (5% MIN.)
PARKING AREA LANDSCAPE PROVIDED:	3,675 SF (25.1%)
SHADE TREES REQUIRED:	2 TREE (1 TREE/12 SPACES)
SHADE TREES PROVIDED:	2 TREE
EACH SPACE WITHIN 100' OF TREE:	PROVIDED
MAX 50% OF LANDSCAPE IN TURF:	PROVIDED

* NOT ALL SHADE TREES CAN BE PLACED AS IT WOULD CONFLICT WITH UNDERGROUND UTILITIES. ORNAMENTAL TREES HAVE BEEN SUBSTITUTED WITH SOME BEING PLACED IN AN ALTERNATE INTERIOR LOCATION.

GENERAL GRADING AND PLANTING NOTES

- BY SUBMITTING A PROPOSAL FOR THE LANDSCAPE PLANTING SCOPE OF WORK, THE CONTRACTOR CONFIRMS THAT HE HAS READ, AND WILL COMPLY WITH, THE ASSOCIATED NOTES, SPECIFICATIONS, AND DETAILS WITH THIS PROJECT.
- THE GENERAL CONTRACTOR IS RESPONSIBLE FOR REMOVING ALL EXISTING VEGETATION (EXCEPT WHERE NOTED TO REMAIN).
- IN THE CONTEXT OF THESE PLANS, NOTES, AND SPECIFICATIONS, "FINISH GRADE" REFERS TO THE FINAL ELEVATION OF THE SOIL SURFACE (NOT TOP OF MULCH) AS INDICATED ON THE GRADING PLANS.
 - BEFORE STARTING WORK, THE LANDSCAPE CONTRACTOR SHALL VERIFY THAT THE ROUGH GRADES OF ALL LANDSCAPE AREAS ARE WITHIN +0.1' OF FINISH GRADE. SEE SPECIFICATIONS FOR MORE DETAILED INSTRUCTION ON TURF AREA AND PLANTING BED PREPARATION.
 - CONSTRUCT AND MAINTAIN FINISH GRADES AS SHOWN ON GRADING PLANS, AND CONSTRUCT AND MAINTAIN SLOPES AS RECOMMENDED BY THE GEOTECHNICAL REPORT. ALL LANDSCAPE AREAS SHALL HAVE POSITIVE DRAINAGE AWAY FROM STRUCTURES AT THE MINIMUM SLOPE SPECIFIED IN THE REPORT AND ON THE GRADING PLANS, AND AREAS OF POTENTIAL PONDING SHALL BE REGRADED TO BLEND IN WITH THE SURROUNDING GRADES AND ELIMINATE PONDING POTENTIAL.
 - THE LANDSCAPE CONTRACTOR SHALL DETERMINE WHETHER OR NOT THE EXPORT OF ANY SOIL WILL BE NEEDED, TAKING INTO ACCOUNT THE ROUGH GRADE PROVIDED, THE AMOUNT OF SOIL AMENDMENTS TO BE ADDED (BASED ON A SOIL TEST PER SPECIFICATIONS), AND THE FINISH GRADES TO BE ESTABLISHED.
 - AFTER INSTALLING SOIL AMENDMENTS IN SHRUB AREAS, AND IN ORDER TO ALLOW FOR PROPER MULCH DEPTH, ENSURE THAT THE FINISH GRADE IMMEDIATELY ADJACENT TO WALKS AND OTHER WALKING SURFACES IS 3" BELOW FINISH GRADE, TAPERING TO MEET FINISH GRADE AT APPROXIMATELY 18" AWAY FROM THE SURFACE.
 - AFTER INSTALLING SOIL AMENDMENTS IN TURF AREAS, ENSURE THAT THE FINISH GRADE IN TURF AREAS IMMEDIATELY ADJACENT TO WALKS AND OTHER WALKING SURFACES IS 1" BELOW FINISH GRADE, TAPERING TO MEET FINISH GRADE AT APPROXIMATELY 18" AWAY FROM THE SURFACE.
 - IF ANY CONFLICTS AND/OR DISCREPANCIES ARISE BETWEEN THE GRADING PLANS, GEOTECHNICAL REPORT, THESE NOTES AND PLANS, AND ACTUAL CONDITIONS, THE CONTRACTOR SHALL IMMEDIATELY BRING SUCH ITEMS TO THE ATTENTION OF THE LANDSCAPE ARCHITECT, GENERAL CONTRACTOR, AND OWNER.
- ALL PLANT LOCATIONS ARE DIAGRAMMATIC. ACTUAL LOCATIONS SHALL BE VERIFIED WITH THE LANDSCAPE ARCHITECT OR DESIGNER PRIOR TO PLANTING. THE LANDSCAPE CONTRACTOR SHALL ENSURE THAT ALL REQUIREMENTS OF THE PERMITTING AUTHORITY ARE MET (I.E., MINIMUM PLANT QUANTITIES, PLANTING METHODS, TREE PROTECTION METHODS, ETC.).
 - THE LANDSCAPE CONTRACTOR IS RESPONSIBLE FOR DETERMINING PLANT QUANTITIES, PLANT QUANTITIES SHOWN ON LEGENDS AND CALLOUTS ARE FOR GENERAL INFORMATION ONLY. IN THE EVENT OF A DISCREPANCY BETWEEN THE PLAN AND THE PLANT LEGEND, THE PLANT QUANTITY AS SHOWN ON THE PLAN (FOR INDIVIDUAL SYMBOLS) OR CALLOUT (FOR GROUND COVER PATTERNS) SHALL TAKE PRECEDENCE.
 - NO SUBSTITUTIONS OF PLANT MATERIALS SHALL BE ALLOWED WITHOUT THE WRITTEN PERMISSION OF THE LANDSCAPE ARCHITECT. IF SOME OF THE PLANTS ARE NOT AVAILABLE, THE LANDSCAPE CONTRACTOR SHALL NOTIFY THE LANDSCAPE ARCHITECT IN WRITING (VIA PROPER CHANNELS).
 - THE CONTRACTOR SHALL, AT A MINIMUM, PROVIDE REPRESENTATIVE PHOTOS OF ALL PLANTS PROPOSED FOR THE PROJECT. THE CONTRACTOR SHALL ALLOW THE LANDSCAPE ARCHITECT AND THE OWNER/OWNER'S REPRESENTATIVE TO INSPECT, AND APPROVE OR REJECT, ALL PLANTS DELIVERED TO THE JOBSITE. REFER TO SPECIFICATIONS FOR ADDITIONAL REQUIREMENTS FOR SUBMITTALS.
 - THE CONTRACTOR SHALL MAINTAIN THE LANDSCAPE IN A HEALTHY CONDITION FOR 90 DAYS AFTER ACCEPTANCE BY THE OWNER. REFER TO SPECIFICATIONS FOR CONDITIONS OF ACCEPTANCE FOR THE START OF THE MAINTENANCE PERIOD, AND FOR FINAL ACCEPTANCE AT THE END OF THE MAINTENANCE PERIOD.
 - CONTRACTOR SHALL MODIFY EXISTING IRRIGATION SYSTEM TO ACCOMMODATE PROPOSED PLANTINGS & ENSURE FULL FUNCTIONALITY OF SYSTEM.
 - SEE SPECIFICATIONS AND DETAILS FOR FURTHER REQUIREMENTS.

NOTE:

ALL LANDSCAPE AREAS, WHETHER REQUIRED OR NOT, MUST BE EQUIPPED WITH A FULLY AUTOMATIC ELECTRONIC LANDSCAPE IRRIGATION SYSTEM DESIGNED AND INSTALLED IN COMPLIANCE WITH CURRENT TEXAS COMMISSION ON ENVIRONMENTAL QUALITY AND CITY OF CARROLLTON LANDSCAPE IRRIGATION REGULATIONS.

MULCHES

AFTER ALL PLANTING IS COMPLETE, CONTRACTOR SHALL INSTALL 4" THICK LAYER OF 1-1/2" SHREDDED WOOD MULCH, NATURAL (UNDYED) IN ALL PLANTING AREAS (EXCEPT FOR TURF AND SEEDING AREAS). CONTRACTOR SHALL SUBMIT SAMPLES OF ALL MULCHES TO LANDSCAPE ARCHITECT AND OWNER FOR APPROVAL PRIOR TO CONSTRUCTION. ABSOLUTELY NO EXPOSED GROUND SHALL BE LEFT SHOWING ANYWHERE ON THE PROJECT AFTER MULCH HAS BEEN INSTALLED (SUBJECT TO THE CONDITIONS AND REQUIREMENTS OF THE "GENERAL GRADING AND PLANTING NOTES" AND SPECIFICATIONS).

ROOT BARRIERS

THE CONTRACTOR SHALL INSTALL ROOT BARRIERS NEAR ALL NEWLY-PLANTED TREES THAT ARE LOCATED WITHIN FIVE (5) FEET OF PAVING OR CURBS. ROOT BARRIERS SHALL BE "CENTURY" OR "DEEP-ROOT" 24" DEEP PANELS (OR EQUAL). BARRIERS SHALL BE LOCATED IMMEDIATELY ADJACENT TO HARDSCAPE. INSTALL PANELS PER MANUFACTURER'S RECOMMENDATIONS. UNDER NO CIRCUMSTANCES SHALL THE CONTRACTOR USE ROOT BARRIERS OF A TYPE THAT COMPLETELY ENCLOSE THE ROOTBALL.

ROCK MULCH

AFTER ALL PLANTING IS COMPLETE, CONTRACTOR SHALL INSTALL 3" THICK LAYER OF RIVER ROCK MULCH OVER LANDSCAPE FABRIC IN ALL PLANTING AREAS. RIVER ROCK MULCH SHALL BE 1-1/2" - 2" STONES, BEIGE IN COLOR (OR AS APPROVED BY OWNER). CONTRACTOR SHALL SUBMIT SAMPLES OF ALL RIVER ROCK MULCHES TO OWNER FOR APPROVAL PRIOR TO CONSTRUCTION. ABSOLUTELY NO EXPOSED GROUND SHALL BE LEFT SHOWING ANYWHERE ON THE PROJECT AFTER RIVER ROCK MULCH HAS BEEN INSTALLED.

UTILITY NOTE

THE EXISTING UTILITIES SHOWN ON THESE PLANS WERE COMPILED FROM VARIOUS SOURCES AND ARE INTENDED TO SHOW THE GENERAL EXISTENCE AND LOCATION OF THE UTILITY INFORMATION ON THE PLANS. THE CONTRACTOR SHALL CONTACT A UTILITY LOCATING SERVICE 48 HOURS PRIOR TO ANY CONSTRUCTION ACTIVITY. THE CONTRACTOR SHALL VERIFY THE EXACT LOCATION AND OF ALL EXISTING UTILITIES AND DETERMINE IF THERE ARE ANY CONFLICTS WITH THE PROPOSED FACILITIES. THE CONTRACTOR SHALL NOTIFY THE ENGINEER IMMEDIATELY WHEN CONFLICTS WITH EXISTING UTILITIES ARE DISCOVERED.

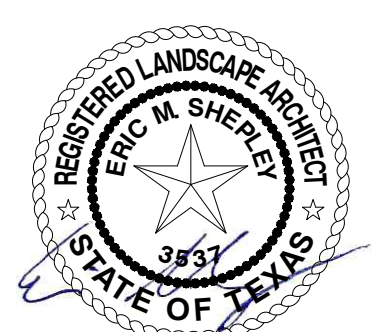


REVISIONS	1	2	3	4	5	6

AutoZone Store No. 10975
 4815 N. JOSEY LANE
 CARROLLTON, TX 75007

Owner / Developer: AUTOZONE DEVELOPMENT LLC
 123 South Front Street, 3rd Floor
 Memphis, Tennessee 38103
 TEL: (901) 495-6736 FAX: (901) 495-8969

For Bidding & Contractor Information Contact:
 Dodge Data & Analytics, Tel. 413-930-4215
 Cindy.searcy@construction.com

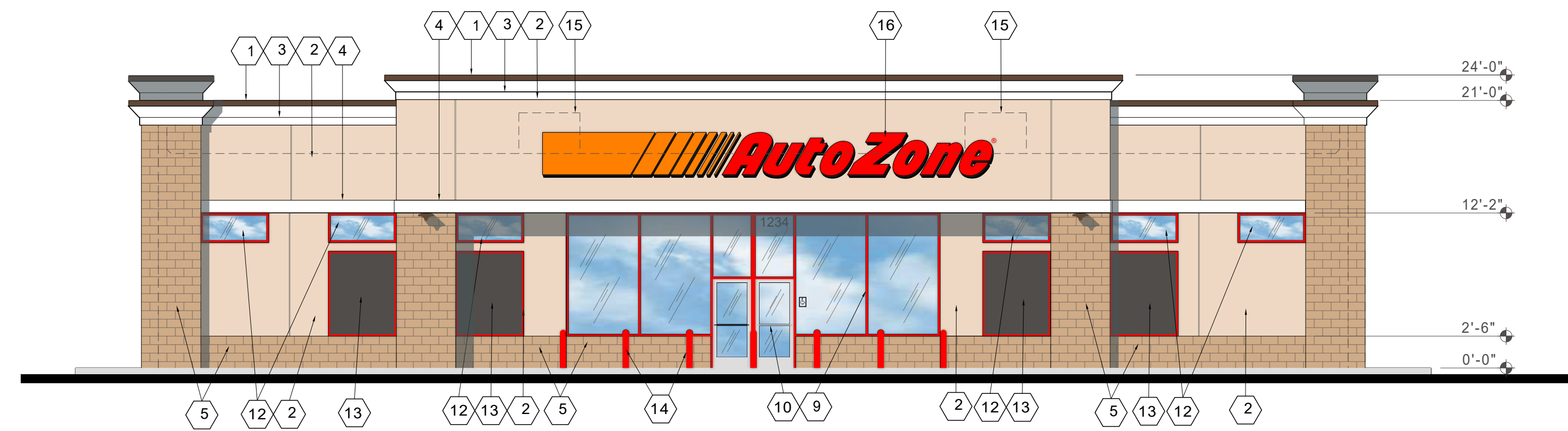


04/21/2026

65W

LP-1

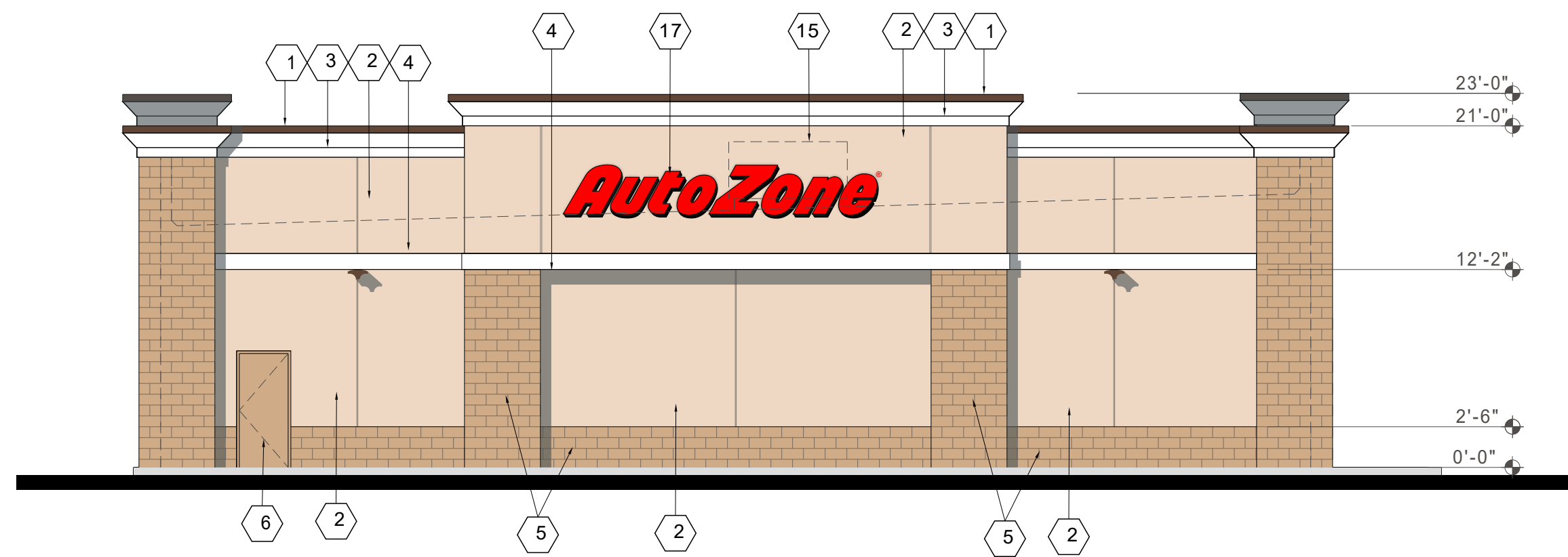
PAPE-DAWSON
 201 MAIN ST, STE 901 | FT. WORTH, TX 76102 | 817.870.3668
 TEXAS ENGINEERING FIRM #470 | TEXAS SURVEYING FIRM #10028800



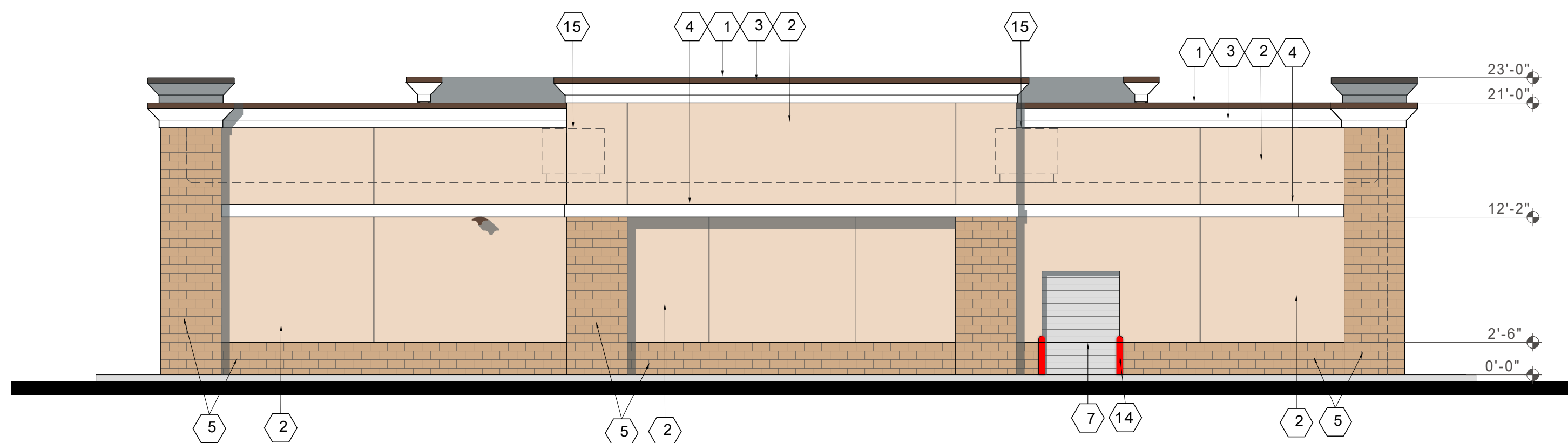
1 EAST ELEVATION - FRONT (HIGH SIDE) ELEVATION
Scale: 1/8"=1'-0"

- 1 TWO PIECE COMPRESSION TRIM - COLOR BRONZE
- 2 1" STUCCO FINISH - COLOR SW6086 SAND DUNE
- 3 1" STUCCO FINISH AT CORNICE - COLOR SW6091 RELIABLE WHITE
- 4 1" STUCCO FINISH AT 2'x 12" PROJECTION- COLOR SW6091 RELIABLE WHITE
- 5 8"x8"x16" SPLITFACE CMU - COLOR SW6088 NUTHATCH
- 6 PAINT MAN DOOR & FRAMES COLOR SW6088 NUTHATCH
DO NOT PAINT OVERHEAD DOOR PAINT ANGLES BLACK
- 7 OVERHEAD DOOR MANUFACTURERS GRAY - PAINT ANGLES SW6088
- 9 ALUMINUM STOREFRONT - RED FINISH - EVERGREEN GLASS
- 10 ALUMINUM STOREFRONT DOORS - CLEAR ANODIZED FINISH
- 11 1" V GROVE SCORE JOINT
- 12 CLERESTORY WINDOW -RED FRAMES - EVERGREEN GLASS
- 13 FAUX WINDOW - RED FRAMES - OPAQUE BLACK GLASS
- 14 PIPE GUARD WITH RED SLEEVE
- 15 ROOF TOP UNITS BEYOND
- 16 FRONT WALL SIGN - 42" CHANNEL LSTRP
- 17 SIDE WALL SIGN - 38" CHANNEL AZ ONLY

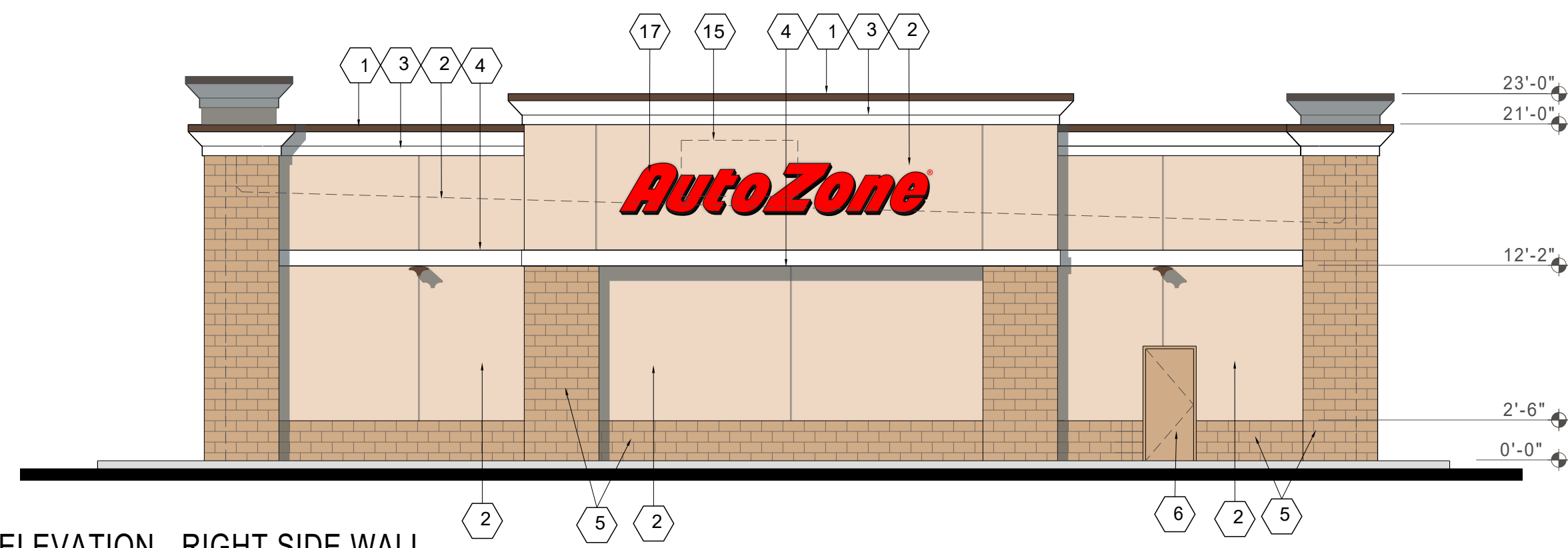
2 ELEVATION KEYNOTES



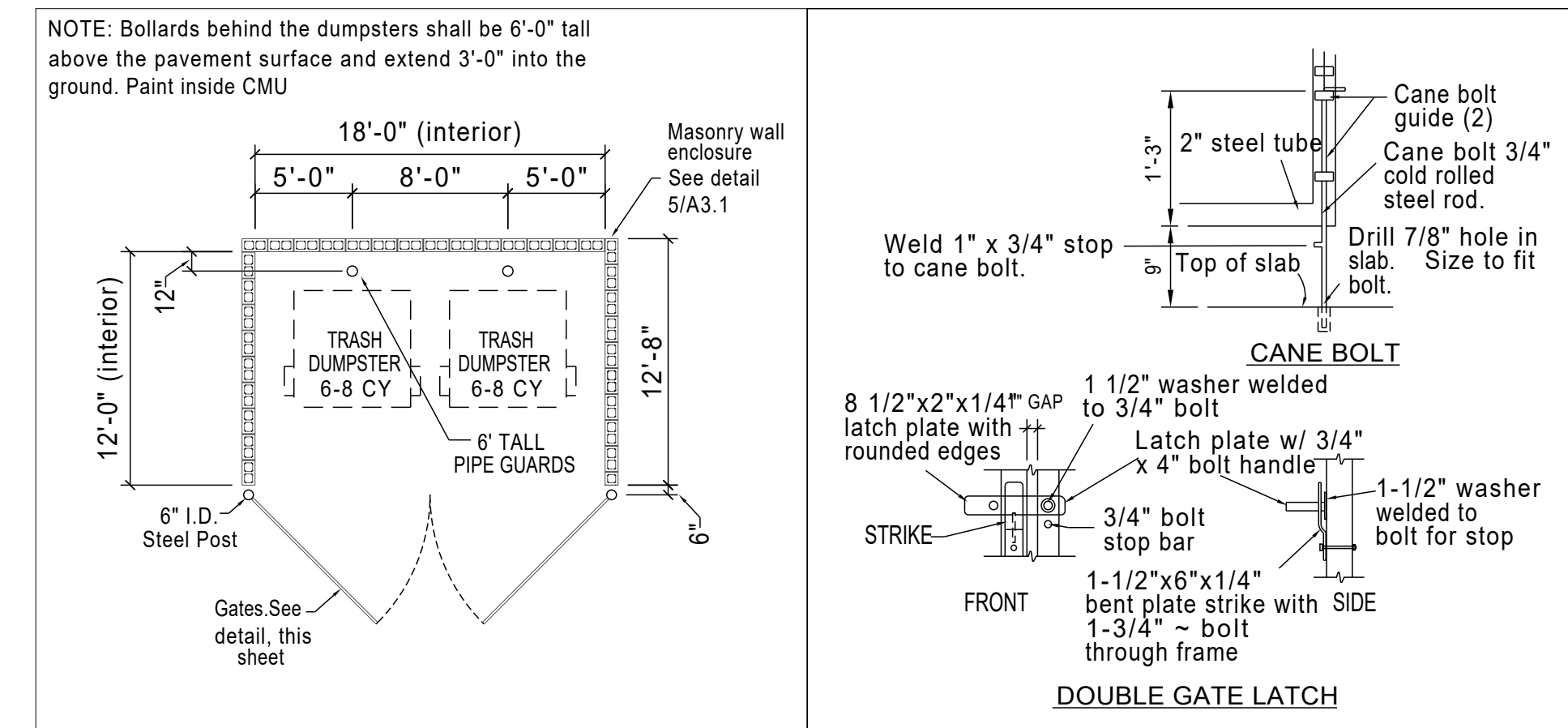
2 SOUTH ELEVATION - LEFT SIDE WALL
Scale: 1/8"=1'-0"



3 WEST ELEVATION - REAR (LOW SIDE) WALL
Scale: 1/8"=1'-0"

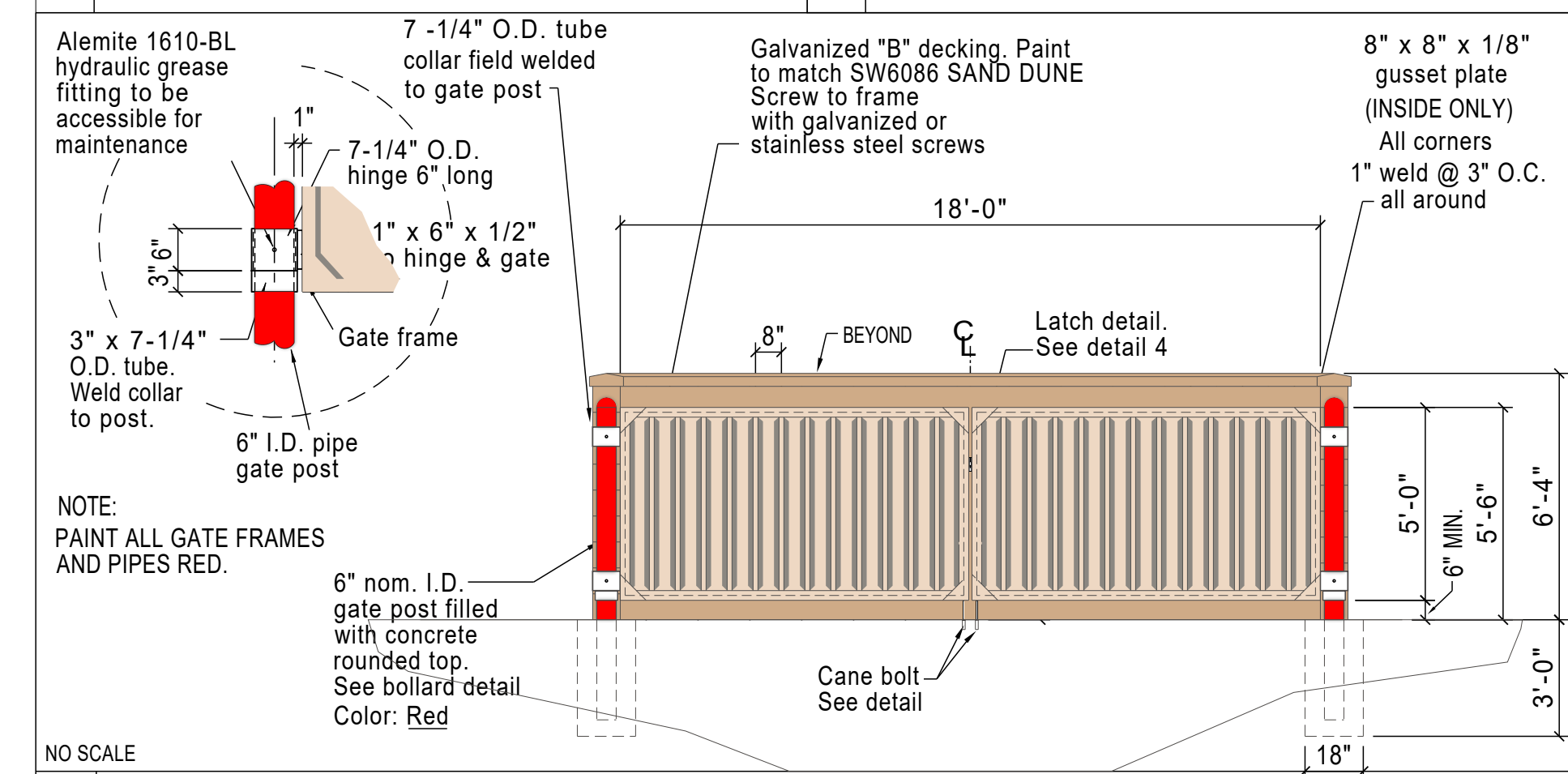


4 NORTH ELEVATION - RIGHT SIDE WALL
Scale: 1/8"=1'-0"

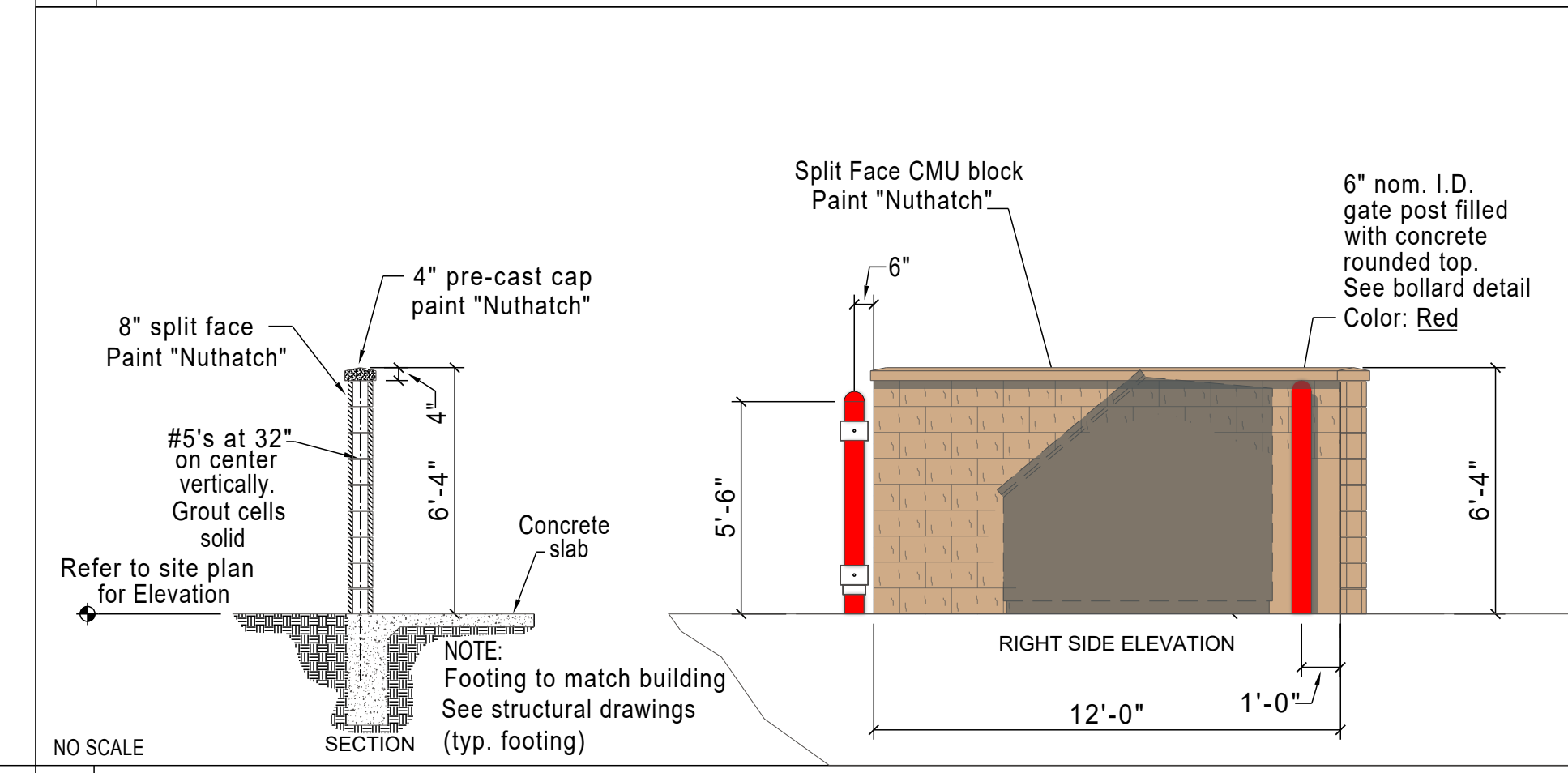


3 18' CMU DUMPSTER LAYOUT

4 GATE LATCH / BOLT DETAILS



5 GATE DETAIL FOR DUMPSTER ENCLOSURE



6 DUMPSTER SECTION & SIDE SECTION

REVISIONS	REV#	DESCRIPTION
1	REV1	
2	REV2	
3	REV3	
4	REV4	
5	REV5	
6	REV6	

AutoZone Store No. 10975
4815 N JOSEY LANE
CARROLLTON TX 75010
COLOR ELEVATION

01/13/26

65W2-L

CE-1

