

SUPPLMENTARY MATERIALS
Examples of two styles of the proposed material,
Applied to the existing concrete retaining wall



SUPPLMENTARY MATERIALS

Photo of a natural stone wall

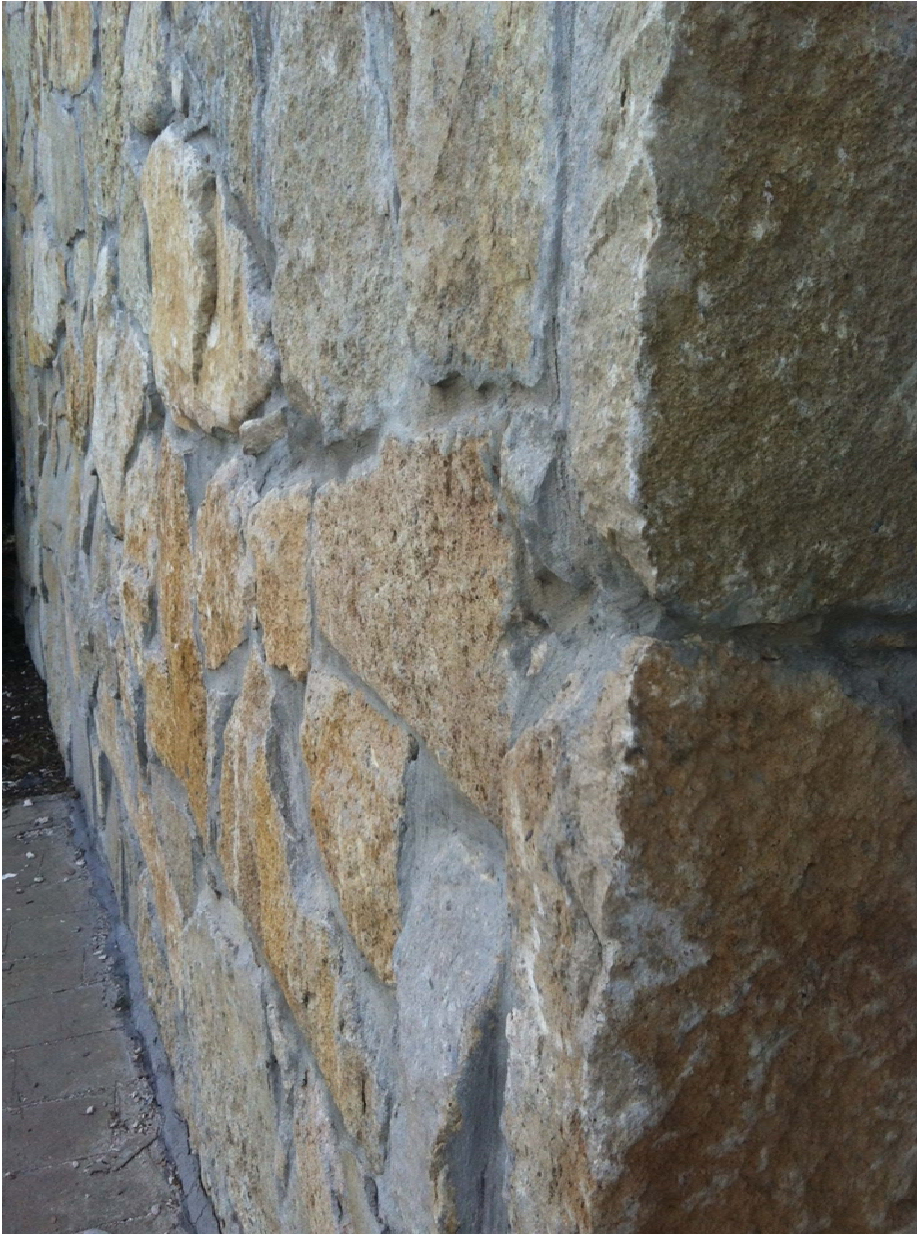


Warmington Meadows example (7 – 8 years old)

SUPPLMENTARY MATERIALS

Photo of a finished application in McKinney
a “tower” in the Adriatica development
natural stone is on the ground floor,
with the *Stone Coat* material in higher, inaccessible locations

(note: these images were not presented to the Planning & Zoning Commission)



Left: Natural stone used at ground level. Note subtle variations in surface.

Below: Note natural stone on first floor of the “tower,”
with Stone Coat material used above.
Note that the Stone Coat “stone” seems “flatter” than the natural stone.



Another view of the tower. The visual difference between natural stone and Stone Coat become less noticeable.



The tower from a greater distance.



Staff noticed no other buildings in the development that seemed to use the Stone Coat material on the first floor.

Right: a pavillion housing pump equipment for the lakes fountain



Below: the chapel. Note also that all retaining walls seemed to be natural stone.

