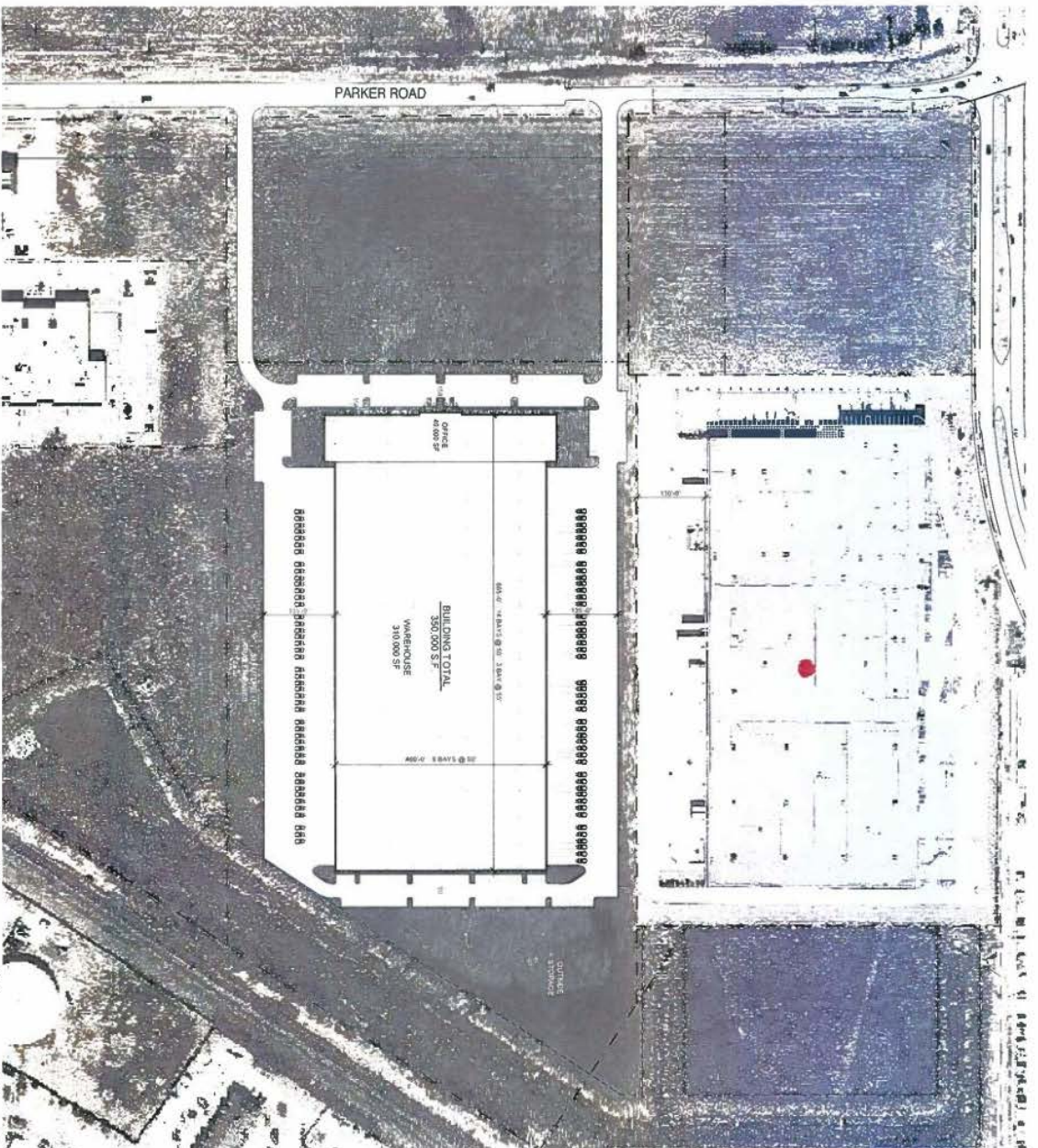


## BUILDING FEATURES

SITE AREA = 886,620 S.F. (23.354 AC.)  
BUILDING AREA = 350,000 S.F. (39.48% COVERAGE)  
PAINT FINISH CONCRETE TILTWALL BUILDING.  
32'-0" CLEAR HEIGHT WAREHOUSE.  
E.S.F.R. FIRE PROTECTION SYSTEM.  
135 TRUCK COURTS  
OFFICE TO SUITE  
DOCK DOORS - (92) 9'X10' AVAILABLE  
248 CAR PARKS PROVIDED.

## Exhibit A.1



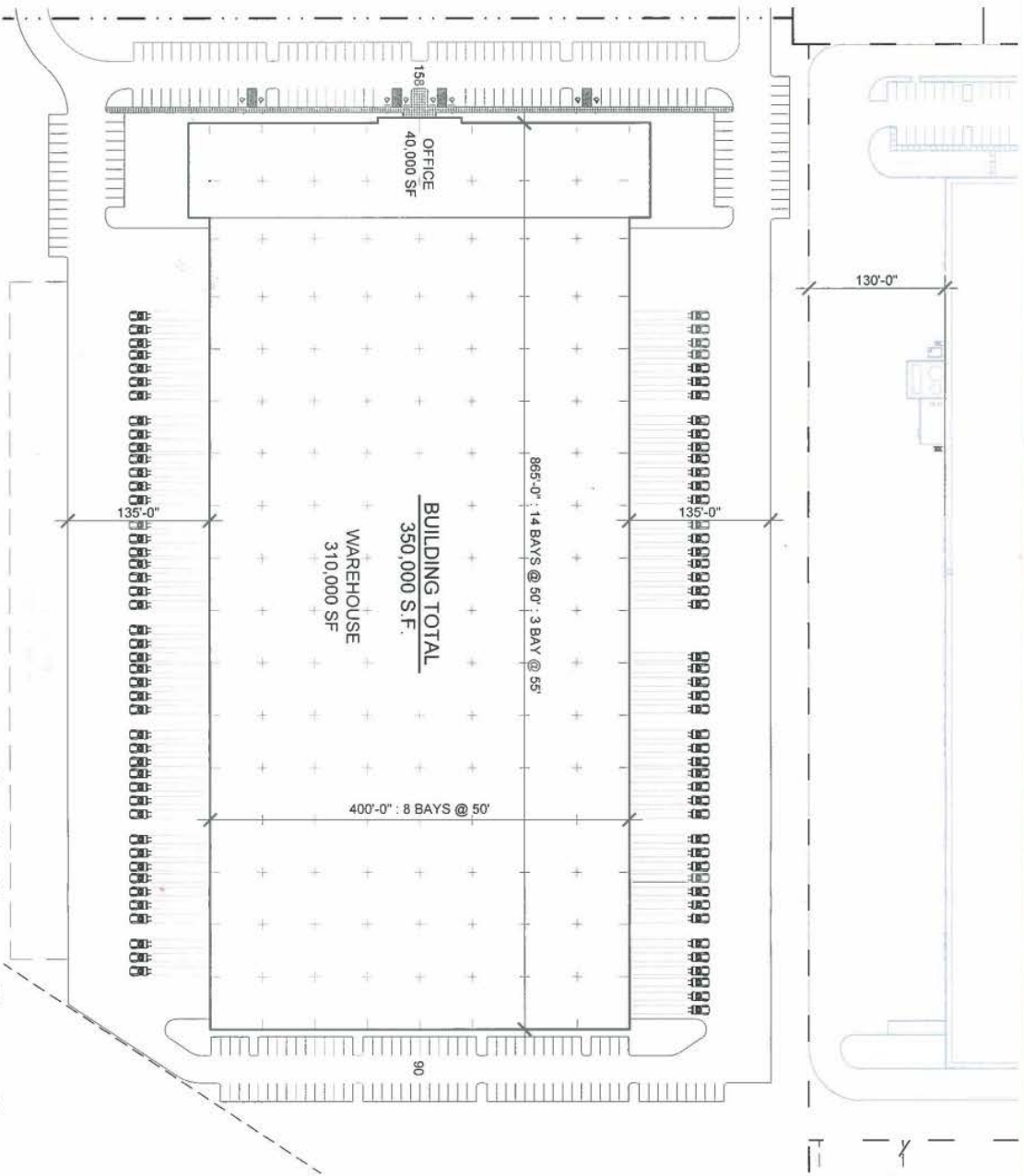
InterCeramic - V3

November 03, 2015

Exhibit A.2

BUILDING FEATURES

- SITE AREA = 886,820 S.F. (23.354 AC.)
- BUILDING AREA = 350,000 S.F. (39.48% COVERAGE)
- PAINT FINISH CONCRETE TILT WALL BUILDING.
- 32'-0" CLEAR HEIGHT WAREHOUSE.
- E.S.F.R. FIRE PROTECTION SYSTEM.
- 135' TRUCK COURTS
- OFFICE TO SUITE
- DOCK DOORS: (92) 9'X10' AVAILABLE
- 248 CAR PARKS PROVIDED.



Billingsley

Inter ceramic - V3

November 03, 2015