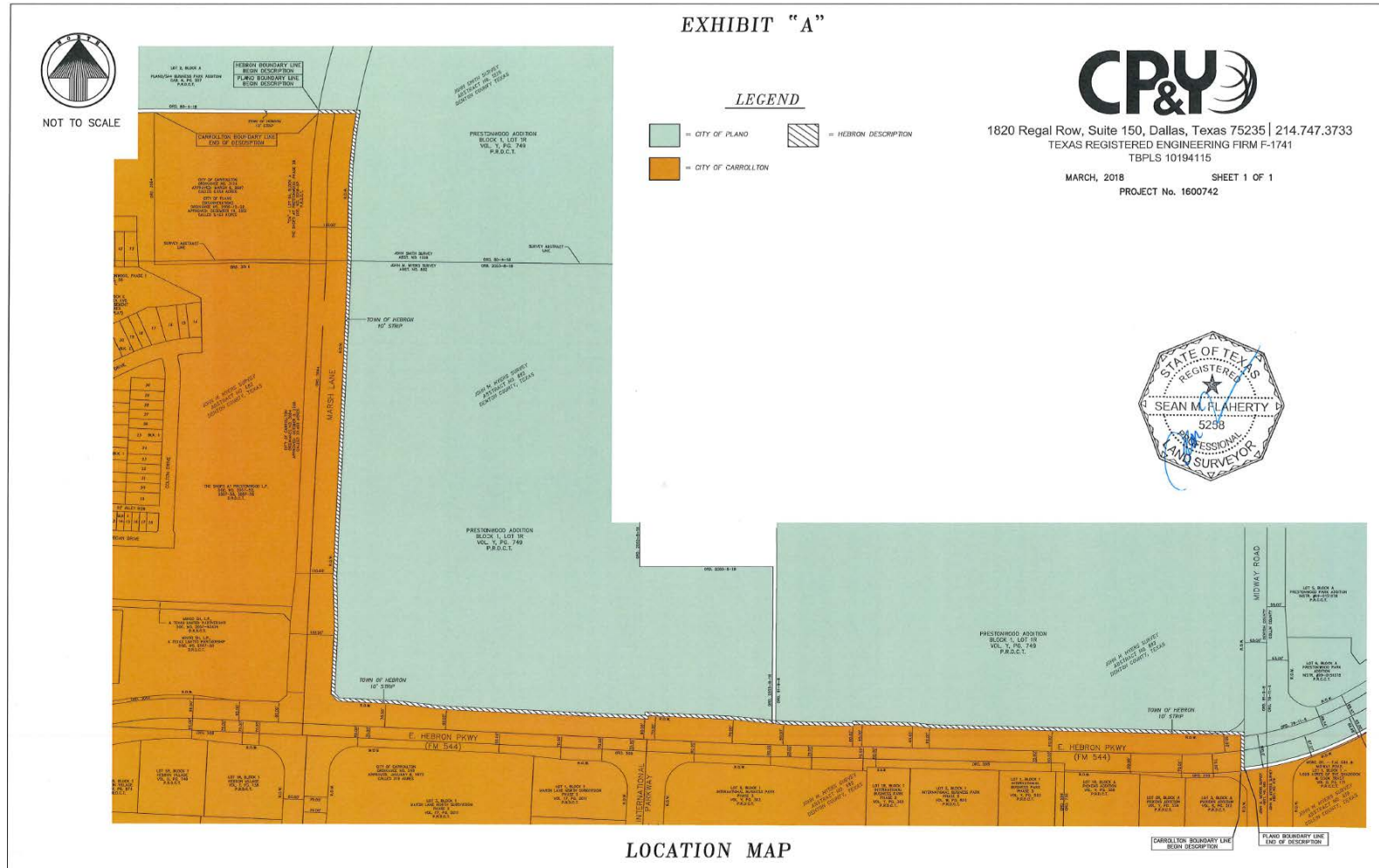
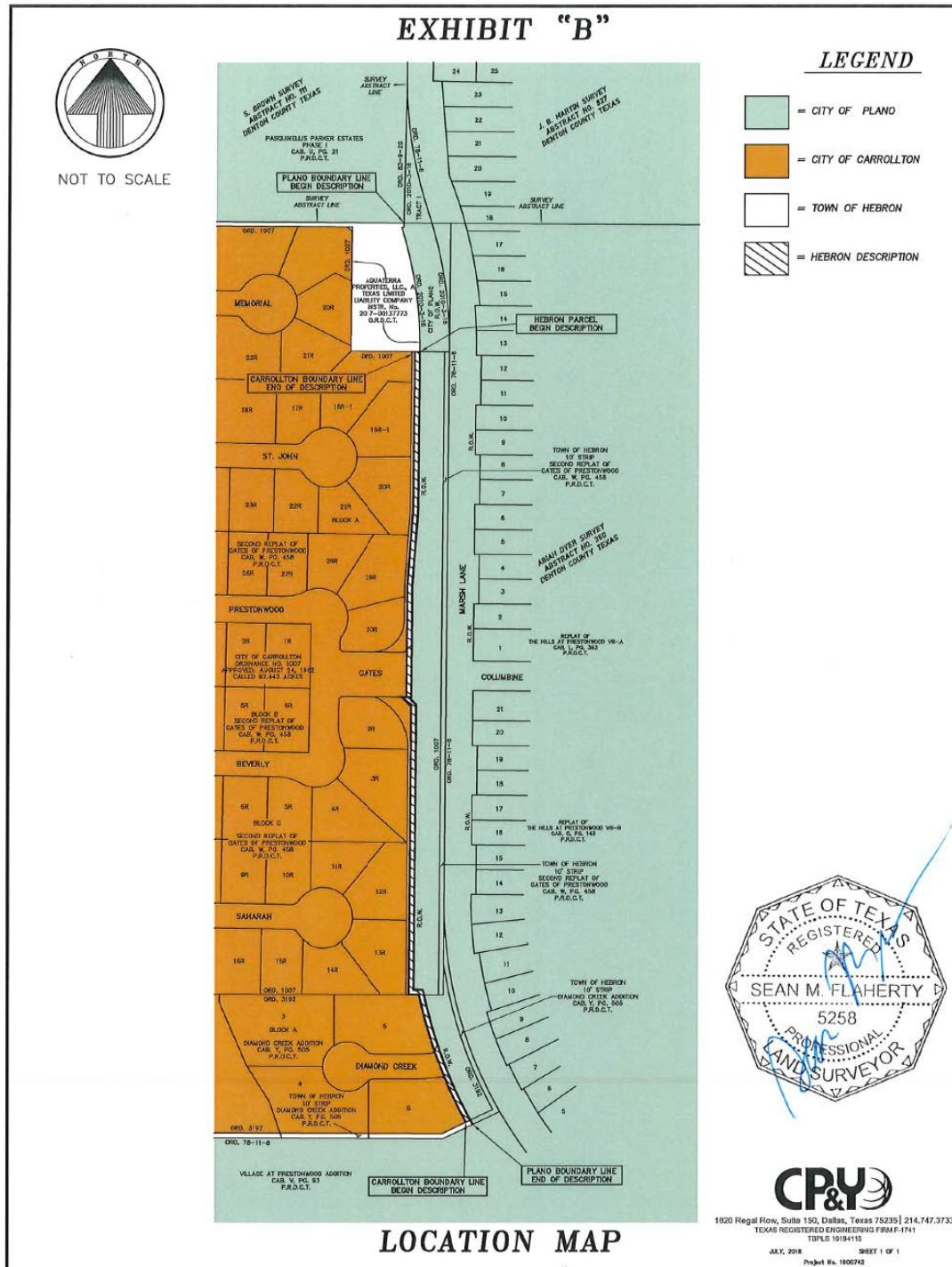


SUMMARY OF BOUNDARY ADJUSTMENTS

EXHIBIT A

Exhibit A shows Carrollton's boundary will move to the east R-O-W line of Marsh Lane and the north R-O-W line of Hebron Parkway. Hebron's 10 foot strip will move from the centerline of the R-O-W to outside the east R-O-W line. Plano's boundary will move eastward to border the east side of Hebron's 10 foot strip. Currently, Hebron's 10 foot strip is located in the centerline of the R-O-W; the western half is currently in Carrollton and the eastern half is in Plano.





SUMMARY OF BOUNDARY ADJUSTMENTS

EXHIBIT C

Exhibit C shows Plano's boundary will move to the south R-O-W line of Park Boulevard. Hebron's 10 foot strip will move eastward to the west R-O-W of Plano Parkway. Carrollton's boundary will move eastward to the west side of Hebron's 10 foot strip along Park Boulevard. Plano will move slightly eastward to the west R-O-W line of Plano Parkway. Currently, Plano's boundary extends slightly beyond the west R-O-W line of Plano Parkway.

